

# School Nurse Resources for Managing Chronic Health Conditions

Missouri's School Nurses as Agents of Change  
for Improving the Health Status of Children



**Peggy Gaddy, RRT, MBA**

Program Manager – Missouri Asthma Prevention and Control Program  
[peggy.gaddy@health.mo.gov](mailto:peggy.gaddy@health.mo.gov)

Friday November 30  
Coordinated School Health Conference  
Lake Ozark, Missouri

# What We Learned about Schools and School Nurses (beyond the obvious ... that children are located there)



## IMPORTANT ATTRIBUTES OF SCHOOLS for management of chronic conditions

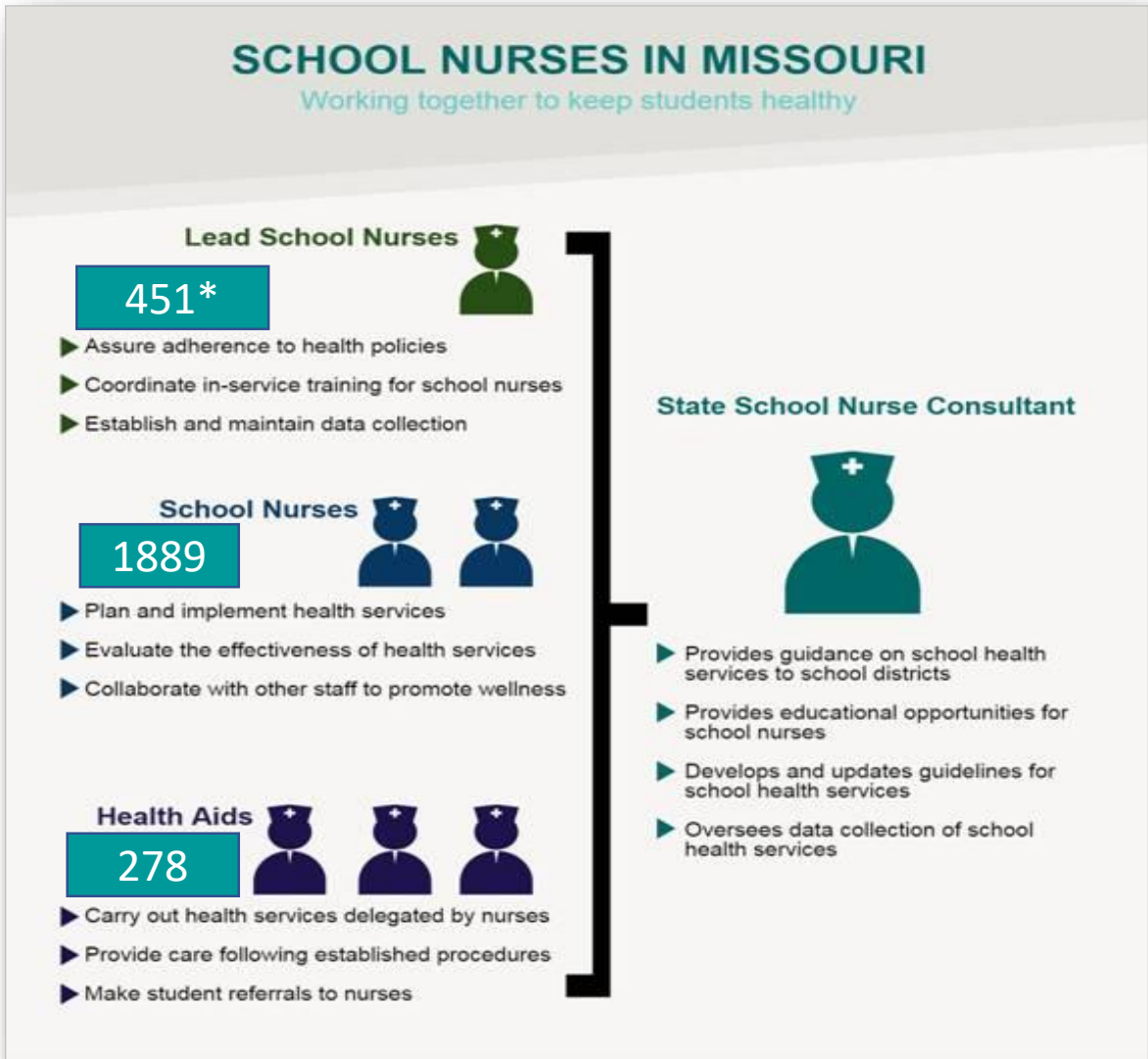
- huge social service agency
- attendance and safety are priorities
- access to parents (but involvement wanes as the child ages)
- longitudinal access and data (on most kids)
- primarily function as care coordinators (not as care providers)
- schools are community organizers

## IMPACT ON EDUCATION

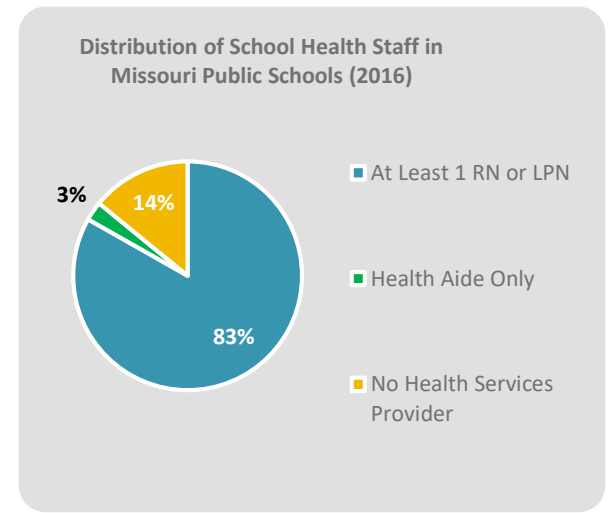
- health status affects educational attainment

# Our Greatest Resource: School Nurses and Health Staff

## A Workforce of over 2,100



- 518 school districts
- 50 have 90% of the school population and have access to school health staff
- 40 of the remaining 468 do not have access to school health staff



\*included in school nurse total

# School Nurses Collect the Data Needed to Tell the Story

## Students with Disease and Conditions in Public Schools, Missouri, 2017-2018

437 out of 518 public school districts reported data to MDHSS. The enrollment in these districts was 830,867, representing 93% of all students enrolled in public schools (893,526) in the 2017-2018 school year.

Disease/Conditions	Number	Disease/Conditions	Number
Allergies – life threatening - Food	21,072	Hemophilia/bleeding disorder	1,894
Allergies – life threatening - Insect	4,441	Hydrocephalus with shunt	633
Allergies – life threatening - Latex	1,140	Kidney disease	1,297
Asthma – on medication at home or school	83,103	Mental Health	
Blind/Visually Impaired	12,415	• ADD/ADHD	66892
Cancer - History, not on medication	761	• Anxiety	14,018
Taking Chemotherapeutic Medication	157	• Asperger's Syndrome	2,318
Chronic infection (e.g., Hepatitis, etc.)	141	• Autism	10,396
Cleft lip and palate	634	• Bi-polar	2,865
Cystic Fibrosis	235	• Depression	8,267
Daily special health care procedures		• Obsessive Compulsive Disorder	1,919
• Blood sugar check	2,377	• Oppositional Defiance Disorder	3,922
• Catheterization care	247	• Post-Traumatic Stress Syndrome	2,093
• Ostomy care	92	• Tourette's syndrome	1,065
• Tube feeding	513	Migraine headaches	14,019
• Ventilator dependent	23	Neuromuscular disorder, non-progressive (e.g., Cerebral Palsy, etc.)	1,997
Deaf/Hearing Impaired with no assistive devices	2,573	Neuromuscular disorder, progressive (e.g., Muscular Dystrophy, etc.)	410
Deaf with FM systems	603	Organ Recipient	154
Deaf with hearing aides	1,725	Orthopedic disability (permanent)	2,177
Deaf with cochlear implants	419	Orthopedic disability (temporary, e.g., Osgood Schlatter, fractures, etc.)	4,210
Diabetes		Scoliosis requiring treatment	1,257
• Type 1	2,234	Pregnancy	455
• Type 2	627	Teen Parenting	604
Drug/alcohol abuse	1,086	Rheumatoid Arthritis	553
Eating disorder (e.g., Anorexia, Bulimia, etc.)	399	Autoimmune disease (e.g., Lupus, etc.)	1,053
Gastrointestinal Disorders (e.g. Irritable Bowel Syndrome, etc.)	5,973	Routine medications at school	19,110
• Crohn's Disease	402	Seizure disorder	7,792
• Ulcers	259	Sickle Cell Disease	676
Bowel/Bladder Incontinence	3,279	Students with "do not attempt resuscitate" (DNAR) order	12
Chromosomal Abnormalities (e.g., Down Syndrome, Neurofibromatosis, etc.)	2,392	Traumatic Brain Injury	762
Heart disease with activity restrictions	1,063	504 Plans	17,959

## System SHORS

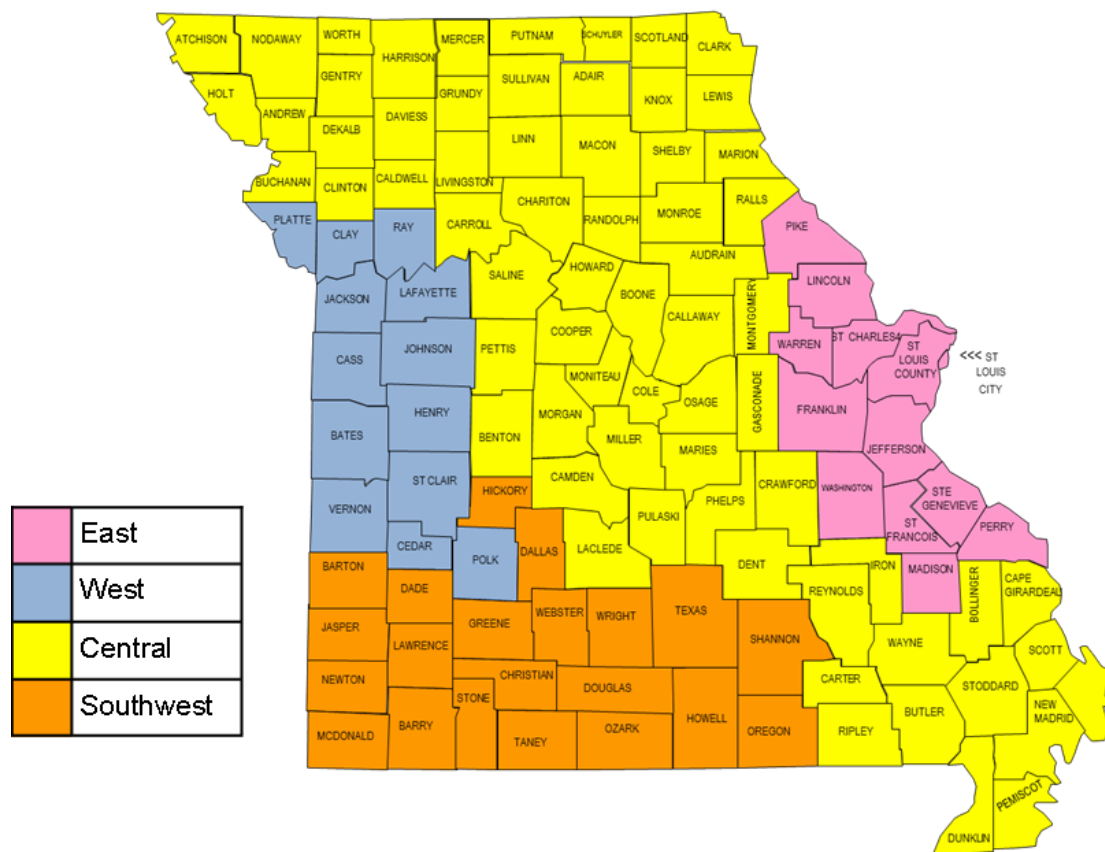
- Collected since 1993
- Public schools in MO



*action*

So.....What can we do to find resources to help you help our kids??

# Managed Care Regions as of May 1, 2017 (When MO implemented Managed Care Statewide)



# Current Health Plans

Managed Care Health Plan	Contact Information
 <p>home state health.</p>	<p>16090 Swingley Ridge Road Suite 500 Chesterfield, MO 63017 Phone: 1-855-694-HOME (4663) Email: <a href="mailto:HomeStateProvider@centene.com">HomeStateProvider@centene.com</a></p>
 <p>missouricare  A WellCare Company</p>	<p>133 S. 11<sup>th</sup> Street Suite 200 St. Louis, MO 63102 Phone: 1-800-322-6027 Website: <a href="http://www.wellcare.com/Missouri/Providers/Medicaid">www.wellcare.com/Missouri/Providers/Medicaid</a></p>
 <p>UnitedHealthcare®</p>	<p>13655 Riverport Drive Maryland Heights, MO 63043 Phone: 1-866-574-6088 Provider Relations: <a href="mailto:Missouri_PR_Team@uhc.com">Missouri PR Team@uhc.com</a> Network Management: <a href="mailto:MO_Network_Mgmt@uhc.com">MO_Network_Mgmt@uhc.com</a></p>

# Coordination with Carved-out Services

- Health Plans are required to *coordinate* all care.
- There are services not included in the Managed Care comprehensive benefit package (carve-outs). These services are covered through Fee-For-Service:
  - The health plan is not obligated to provide or pay for any services not included in the comprehensive benefit package.
  - The health plan is responsible for coordinating the provision of services in the comprehensive benefit package with services that are carved-out.



# Examples of Carve Out Services

- Pharmacy Services
- Behavioral Health Services
- Comprehensive Substance Treatment and Rehabilitation (C-STAR) Services
- Environmental lead assessments for children with elevated blood lead levels
- Public Health Programs
- SAFE-CARE Exams
- Services in a School Setting
- Transplant Services

# Advantages of Managed Care

- Choice of health plan
- Connected with a Primary Care Provider of choice
- Health plan coordination of referrals to specialists
- Health plan coordination with appointments and transportations
- Health plan coordination with Health Homes and Local Community Care Coordination Programs (LCCCPs)
- Health plan referrals to social supports and other community resources
- Educational health-related information for children and adults
- Care management for certain conditions and upon request
- Additional health care services and incentives

# Additional Benefits – Home State Health

- After School Youth Program: Girl Scouts, Boy Scouts, YMCA, LINC, 4-H
- Baby Shower for Moms: Class presentation on prenatal care, labor and delivery, postpartum care and baby care.
- Enhanced & Same Day Transportation Non-Emergent Medical Transportation
- Mobile Texting & ConnectionsPlus Phone Program: Provides members with a cellular phone for improved care.
- Puffletown: Members in Asthma Case Management will receive Peak Flow Meters and spacers, along with a self-management guide.

# Additional Benefits – United HealthCare

- Hypoallergenic Assistance for individuals with asthma.
- JOIN for ME: A childhood obesity program developed to address childhood obesity.
- On My Way: Teaches youth aging out of foster care how to transition into independent living.
- Airwaze: Provides tailored asthma education, customizable medication reminders and other self-management tools.
- Peer Support Specialist: A foster-care peer support specialist working with youth in the foster care system and their families.

# Additional Benefits – Missouri Care

- After School Clubs Program: 4-H, Boys and Girls Club, Girl Scouts, Boy Scouts.
- Diabetes Camp & Visual Impairment Camps for ages 8-14
- Peak Flow Meters Program: Unlimited peak flow meters mailed directly to their home.
- Enhanced Non-Emergent Medical Transportation
- Curves Complete and Weight Watchers for children ages 12-17
- Equine Therapy for members with autism: can receive ten free riding session per year at PATH centers.

# School Nurse Link - Home



- HOME STATE HEALTH
- MISSOURI CARE
- UNITED HEALTHCARE
- MO HEALTHNET
- PHARMACY PROGRAM BY MO HEALTHNET

## Why Connect

[Type equation here.](#)

PARTICIPATING HEALTH PLANS

### Save time and get extra services for children.

Each participating health plan provides a special time-saving service for you to access resources that support effective care coordination.

The health plans can help you:

1. **communicate with physicians** and other health care providers,
2. obtain same-day or next-day **transportation**,





[www.SchoolNurseLink.com](http://www.SchoolNurseLink.com)

## Why connect with managed Medicaid health plans?

- **Get extra services and benefits for children.**
- **Save time for school nurses**

New FERPA  
template available

Health plans can help school nurses:

1. **communicate with physicians** and other health care providers,
2. obtain same-day or next-day **transportation**,
3. make **appointments with specialists** as well as primary care physicians,
4. **make referrals** for self-management education or home visit programs

# Questions